



MODULAR HOUSES

**Made on a steel
frame basis**



+48 501-324-654



biuro@rosil.pl



ROSIL
B U D O W N I C T W O

For more information visit:
www.rosil.pl



COMPANY DESCRIPTION

ROSIL COMPANY - We build modular homes, single and multi-family houses and non-standard structures. Our technology is based on a lightweight steel frame made of cold-formed profiles. It is a modern technology that is an alternative to traditional construction. Characterized by a fast construction process, precision workmanship, low operating costs, energy efficiency, functionality and, above all, it is the solution of the future.

Modular houses are delivered directly to the construction site, in the standard of finishing then specified by the customer.

Each project we carry out is "tailor-made" according to the investor's requirements. Using our experience and expertise in frame and modular construction, we are able to adapt almost any project to individual customer requirements and needs. We will select the optimal solution and prepare all necessary designs.

We work with construction companies as well as individual clients in Poland and abroad.



+48 501-324-654



biuro@rosil.pl



ROSIL
BUDOWNICTWO



NOTICE

.....

.....

.....

.....

.....

.....

.....

.....

.....

.....

.....

.....

.....

.....

.....

.....

.....

.....

.....

.....

.....

.....

 +48 501-324-654
 biuro@rosil.pl





Building area (m²): 19,2 / 22,5 / 25,6 / 28,8
Usable area (m²): 13,5 / 16,0 / 19,0 / 21,6

MODULAR HOUSE ECORENT

+48 501-324-654
biuro@rosil.pl

Partition walls can be individually arranged



TWO FINISH RANGES:

1. DEVELOPER
2. DEVELOPER+

STEEL FRAME



Building area (m²): 35
Usable area (m²): 28,61

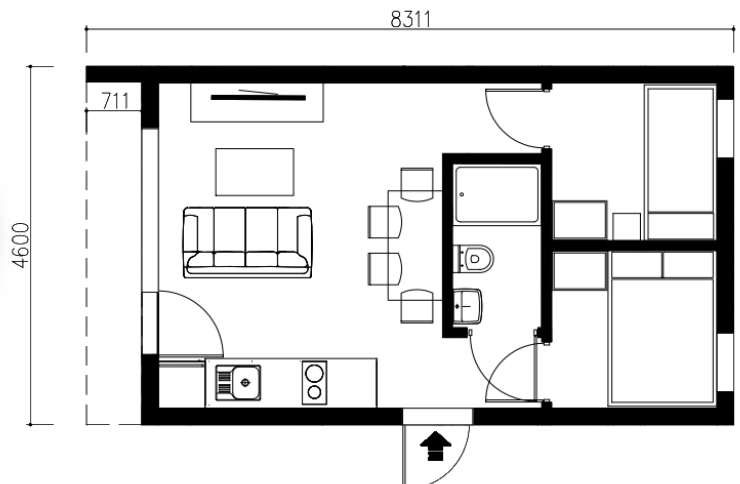
MODULAR HOUSE **LITTLEBOY**

+48 501-324-654
biuro@rosil.pl

Partition walls can be
individually arranged



Sample interior design



**TWO FINISH
RANGES:**

1. DEVELOPER
2. DEVELOPER+

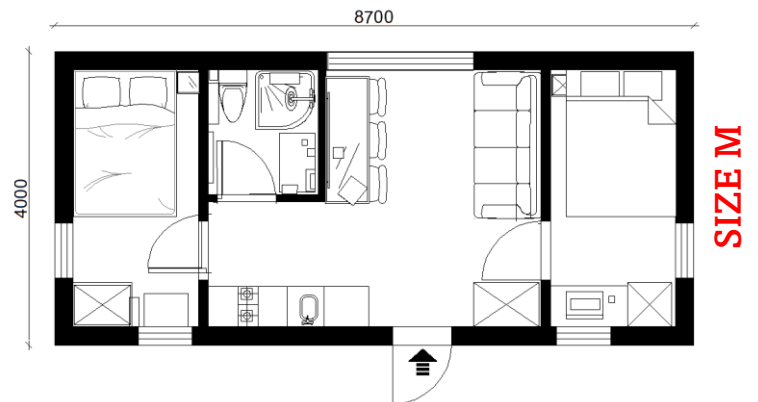
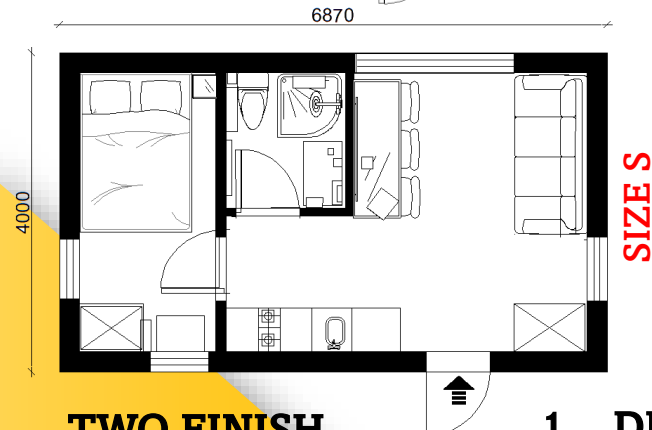
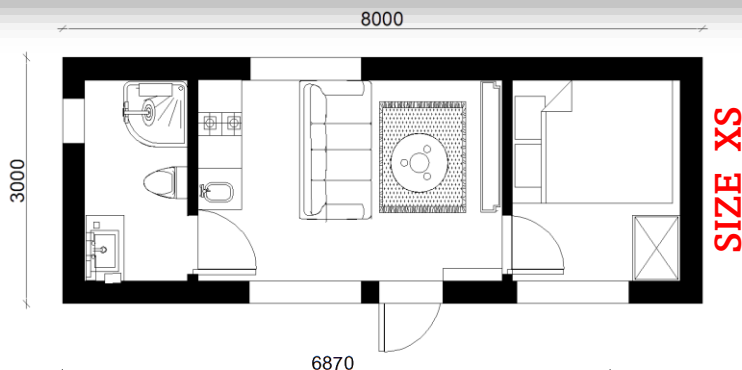
STEEL FRAME



Building area (m²): 19,2 / 22,5 / 25,6
Usable area (m²): 13,5 / 16,0 / 19,0

MODULAR HOUSE BARN

+48 501-324-654
biuro@rosil.pl



**TWO FINISH
RANGES:**

1. DEVELOPER
2. DEVELOPER+

STEEL FRAME



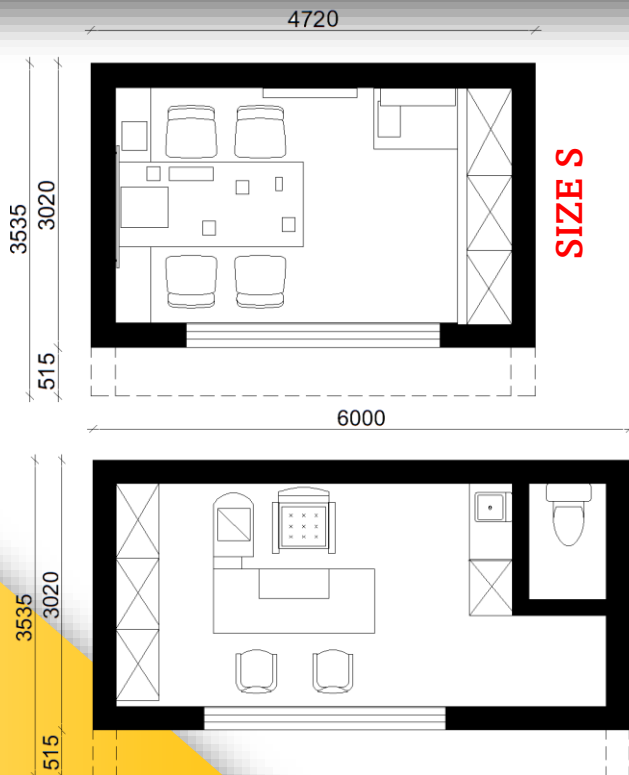
ROSIL
BUDOWNICTWO



Building area (m²): 16,5/21,0/25,4
Usable area (m²): 10,5/13,5/17,5

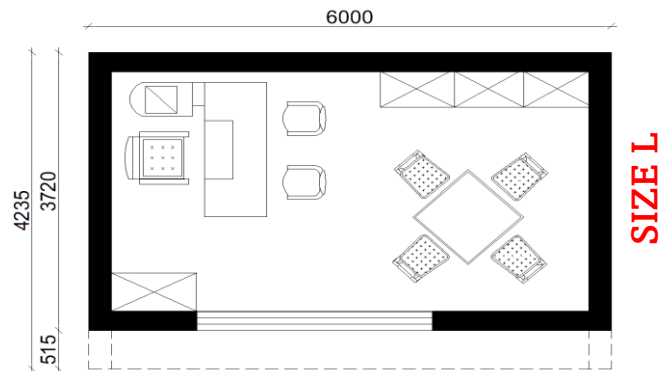
MODULAR HOUSE GARDEN OFFICE

+48 501-324-654
biuro@rosil.pl



SIZE S

SIZE M



SIZE L

**TWO FINISH
RANGES:**

1. DEVELOPER
2. DEVELOPER+

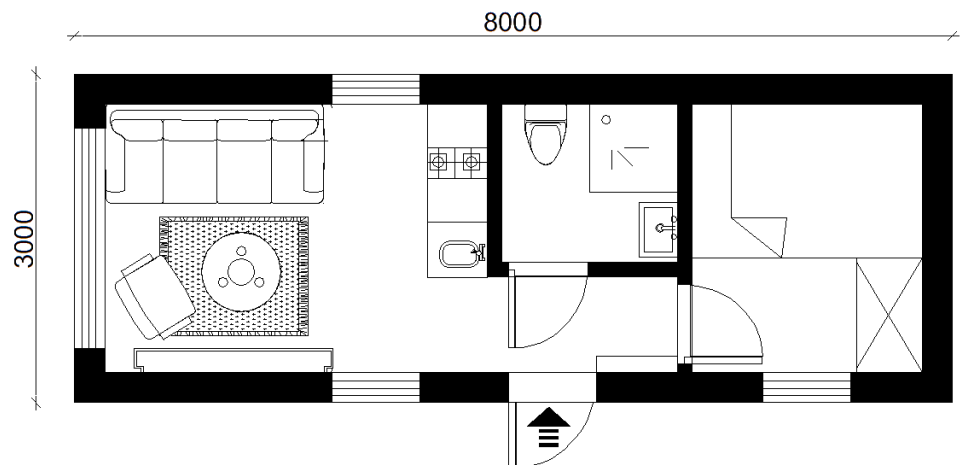
STEEL FRAME



Building area (m²): 24
Usable area (m²): 17,5

MODULAR HOUSE **BEEMODULAR I**

+48 501-324-654
biuro@rosil.pl



**TWO FINISH
RANGES:**

1. DEVELOPER
2. DEVELOPER+

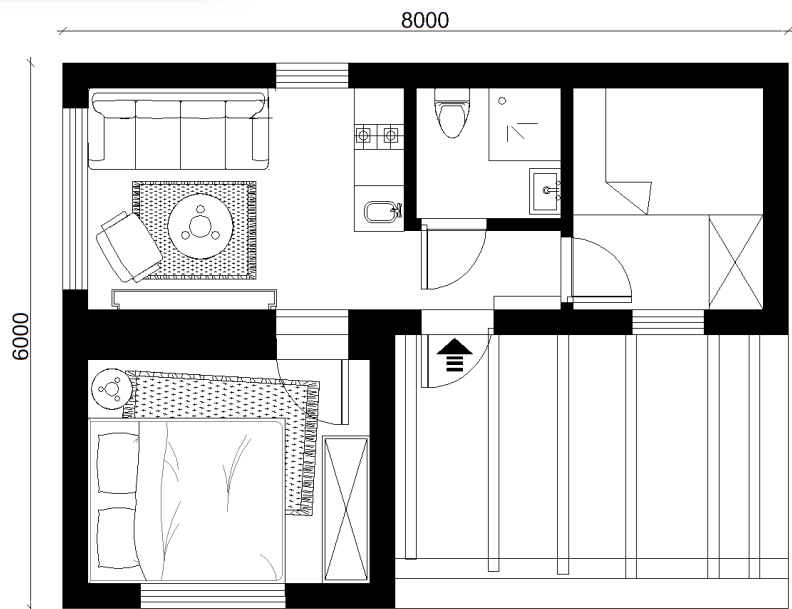
STEEL FRAME



Building area (m²): 35
Usable area (m²): 25

MODULAR HOUSE **BEEMODULAR I+**

+48 501-324-654
biuro@rosil.pl



**TWO FINISH
RANGES:**

1. DEVELOPER
2. DEVELOPER+

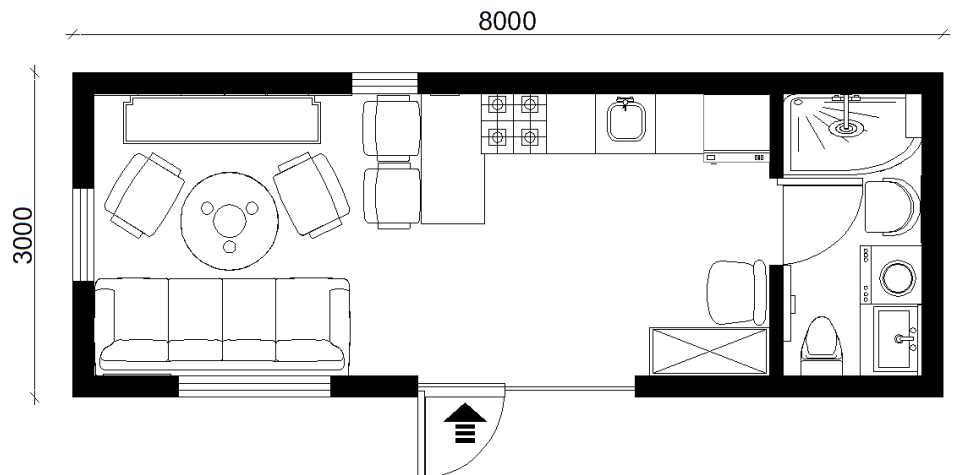
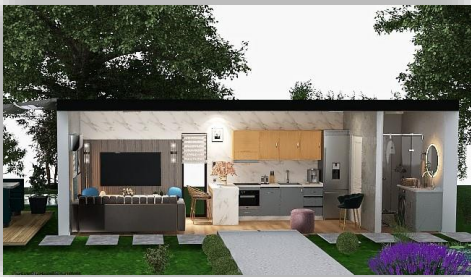
STEEL FRAME



Building area (m²): 24
Usable area (m²): 18

MODULAR HOUSE **BEEMODULAR II**

+48 501-324-654
biuro@rosil.pl



**TWO FINISH
RANGES:**

1. DEVELOPER
2. DEVELOPER+

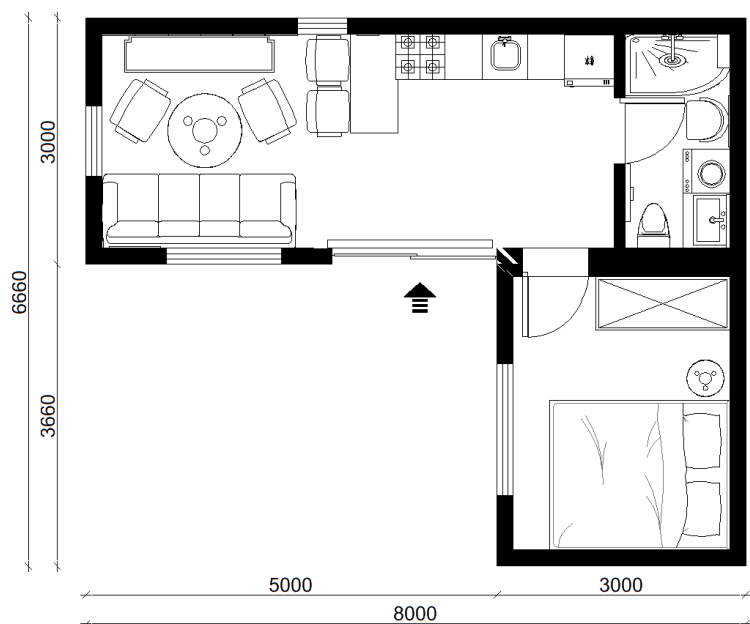
STEEL FRAME



Building area (m²): 35
Usable area (m²): 25,8

MODULAR HOUSE BEEMODULAR II+

+48 501-324-654
biuro@rosil.pl



**TWO FINISH
RANGES:**

1. DEVELOPER
2. DEVELOPER+

STEEL FRAME

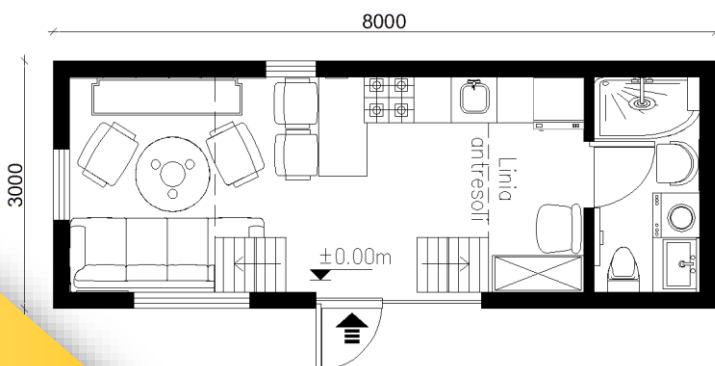


Building area (m²): 24
Usable area (m²): 18+10

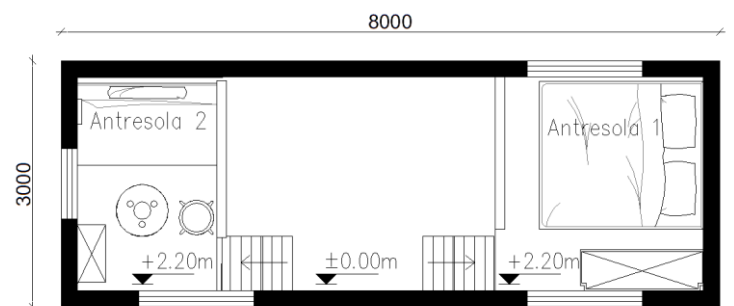
MODULAR HOUSE NIXEL

+48 501-324-654
biuro@rosil.pl

GROUND FLOOR



2 x MEZZANINE



**TWO FINISH
RANGES:**

1. DEVELOPER
2. DEVELOPER+

STEEL FRAME



ROSIL
BUDOWNICTWO

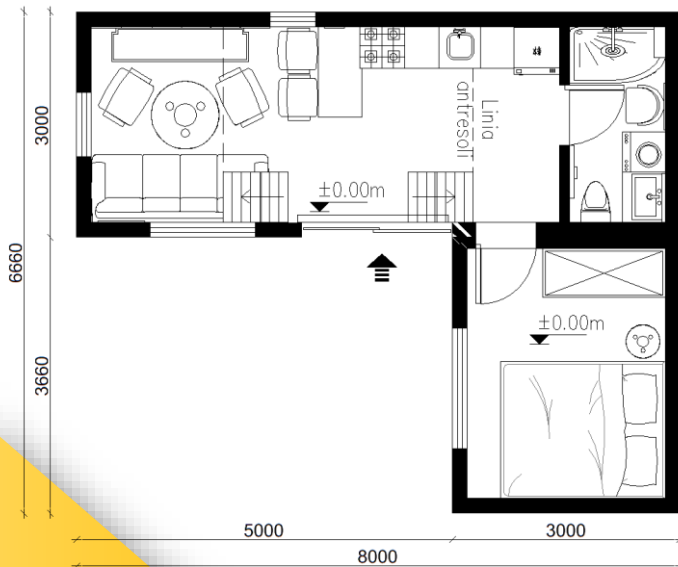


Building area (m²): 35
Usable area (m²): 25,5+10

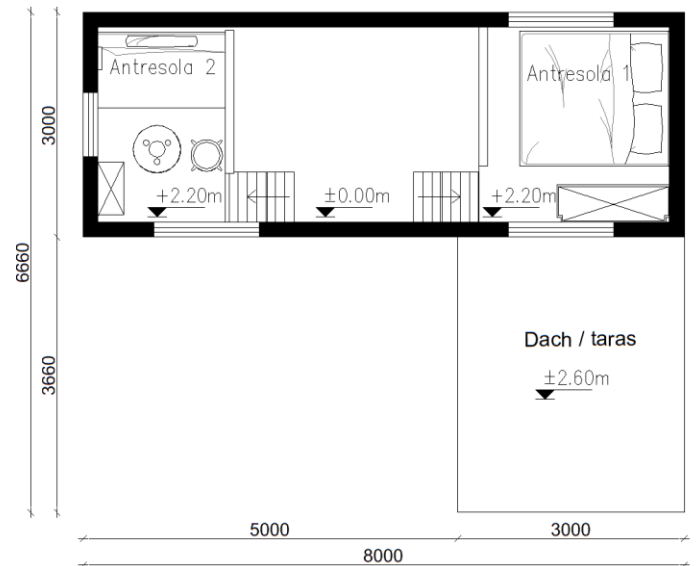
MODULAR HOUSE **NIXEL+**

+48 501-324-654
biuro@rosil.pl

GROUND FLOOR



2 x MEZZANINE + TERRACE



**TWO FINISH
RANGES:**

1. DEVELOPER
2. DEVELOPER+

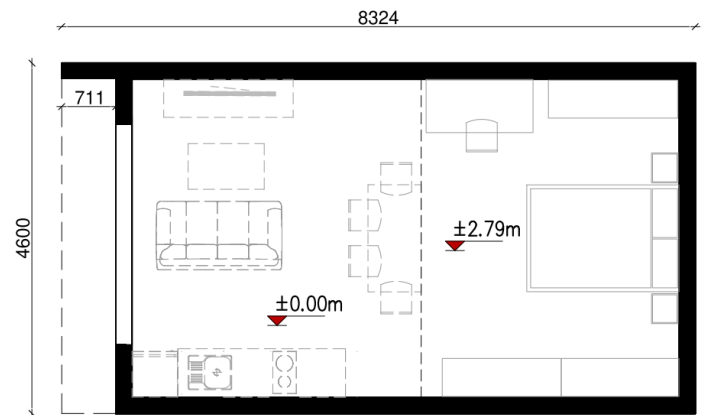
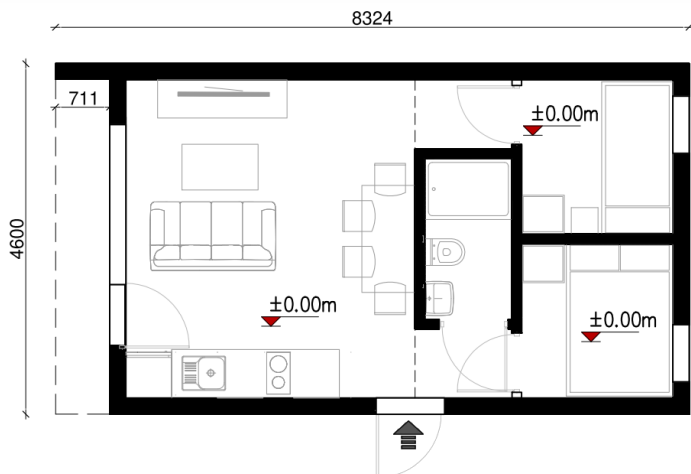
STEEL FRAME



MODULAR HOUSE BIG BROTHER

+48 501-324-654
biuro@rosil.pl

Building area (m²): 35
Usable area (m²): 31+15



GROUND FLOOR



MEZZANINE



**STANDARD
FINISH:**

1. DEVELOPER

STEEL FRAME

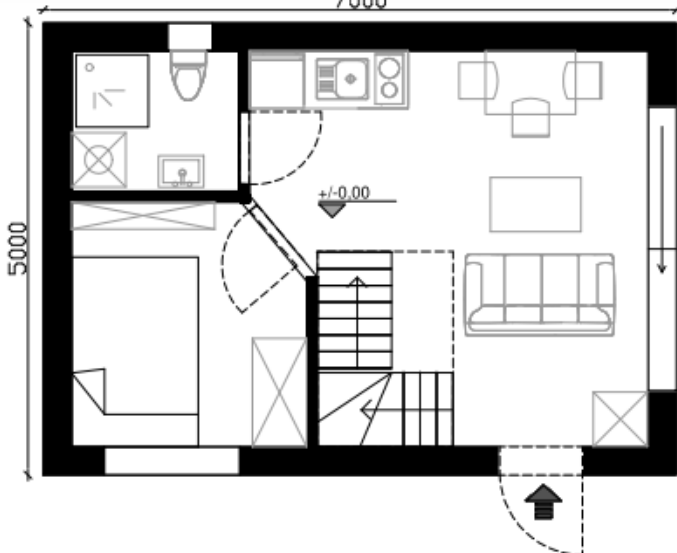


FRAME HOUSE
LUMENA

+48 501-324-654
biuro@rosil.pl

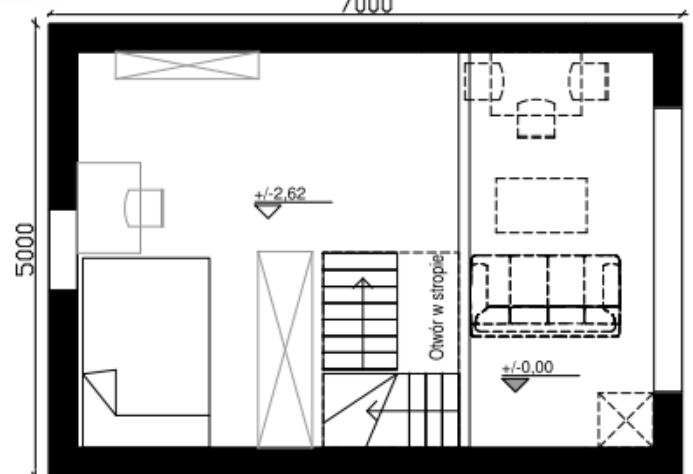
GROUND FLOOR

7000



MEZZANINE

7000



Building area (m²): 35
Usable area (m²): 27+15



TWO FINISH RANGES:

1. BUILDING SHELL
2. DEVELOPER

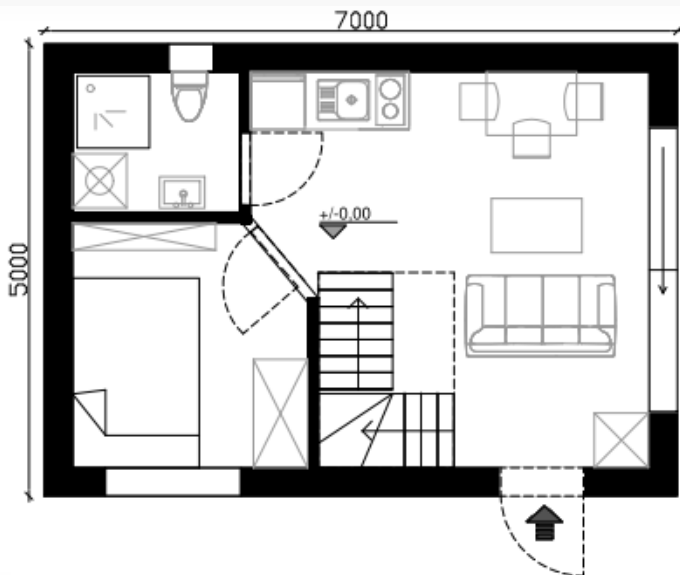
STEEL FRAME OR WOODEN FRAME



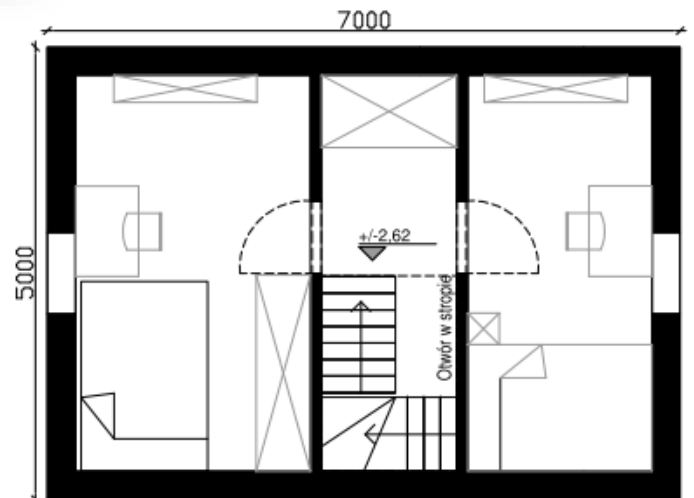
FRAME HOUSE
LUMENA+

+48 501-324-654
biuro@rosil.pl

GROUND FLOOR



FIRST FLOOR



Building area (m²): 35
Usable area (m²): 27+23



TWO FINISH RANGES:

- 1. BUILDING SHELL**
- 2. DEVELOPER**

STEEL FRAME OR WOODEN FRAME



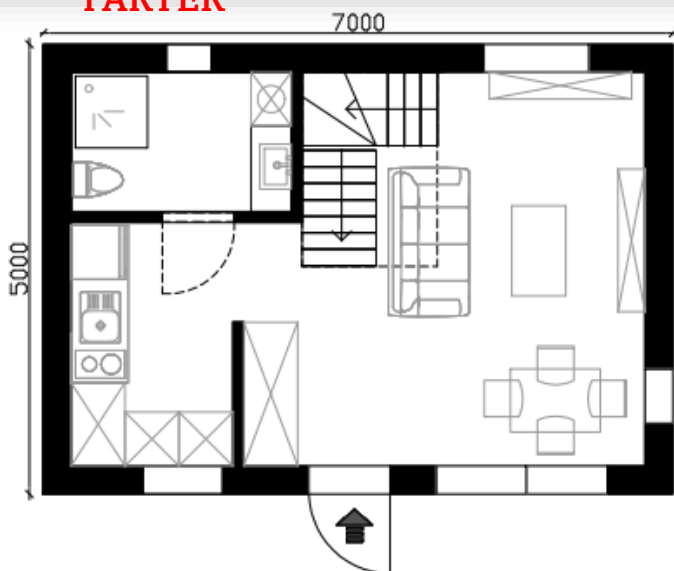
ROSIL
BUDOWNICTWO



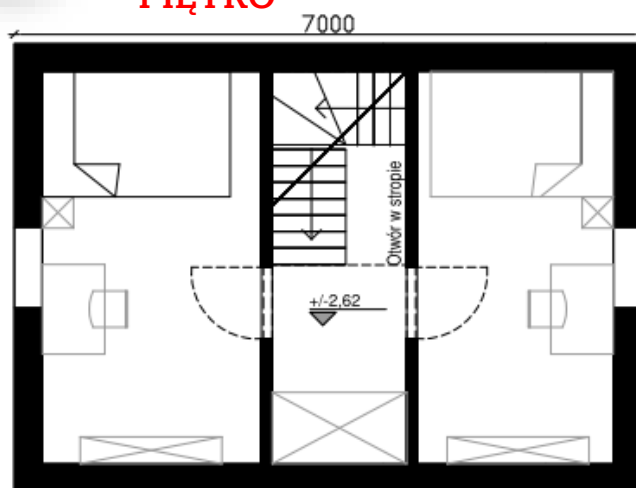
FRAME HOUSE **NEKTAR**

+48 501-324-654
biuro@rosil.pl

PARTER



PIĘTRO



Building area (m²): 35
Usable area (m²): 27+23



**TWO FINISH
RANGES:**

- 1. BUILDING SHELL**
- 2. DEVELOPER**

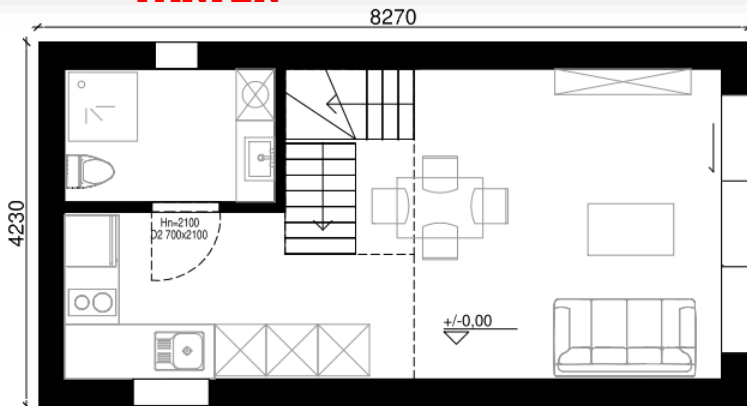
**STEEL FRAME
OR WOODEN FRAME**



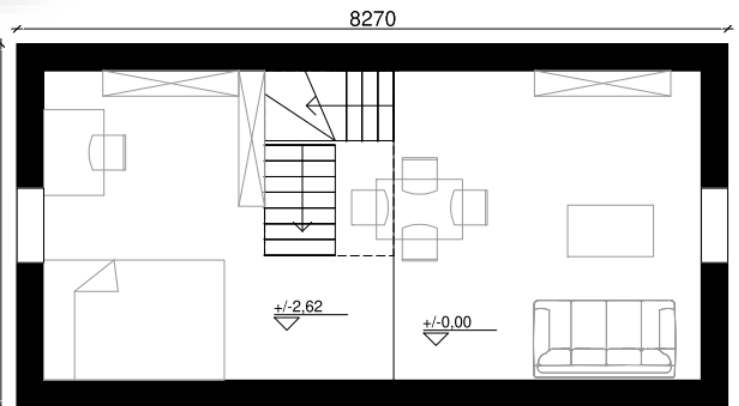
FRAME HOUSE
LAVENDER

+48 501-324-654
biuro@rosil.pl

PARTER



ANTRESOLA



Building area (m²): 35
Usable area (m²): 27+15



TWO FINISH RANGES:

1. BUILDING SHELL
2. DEVELOPER

STEEL FRAME OR WOODEN FRAME



DOM SZKIELETOWY AROMA

+48 501-324-654
biuro@rosil.pl

PARTER I



PARTER II



Building area (m²): 98
Usable area (m²): 82

**TWO FINISH
RANGES:**

1. BUILDING SHELL
2. DEVELOPER

WOODEN FRAME

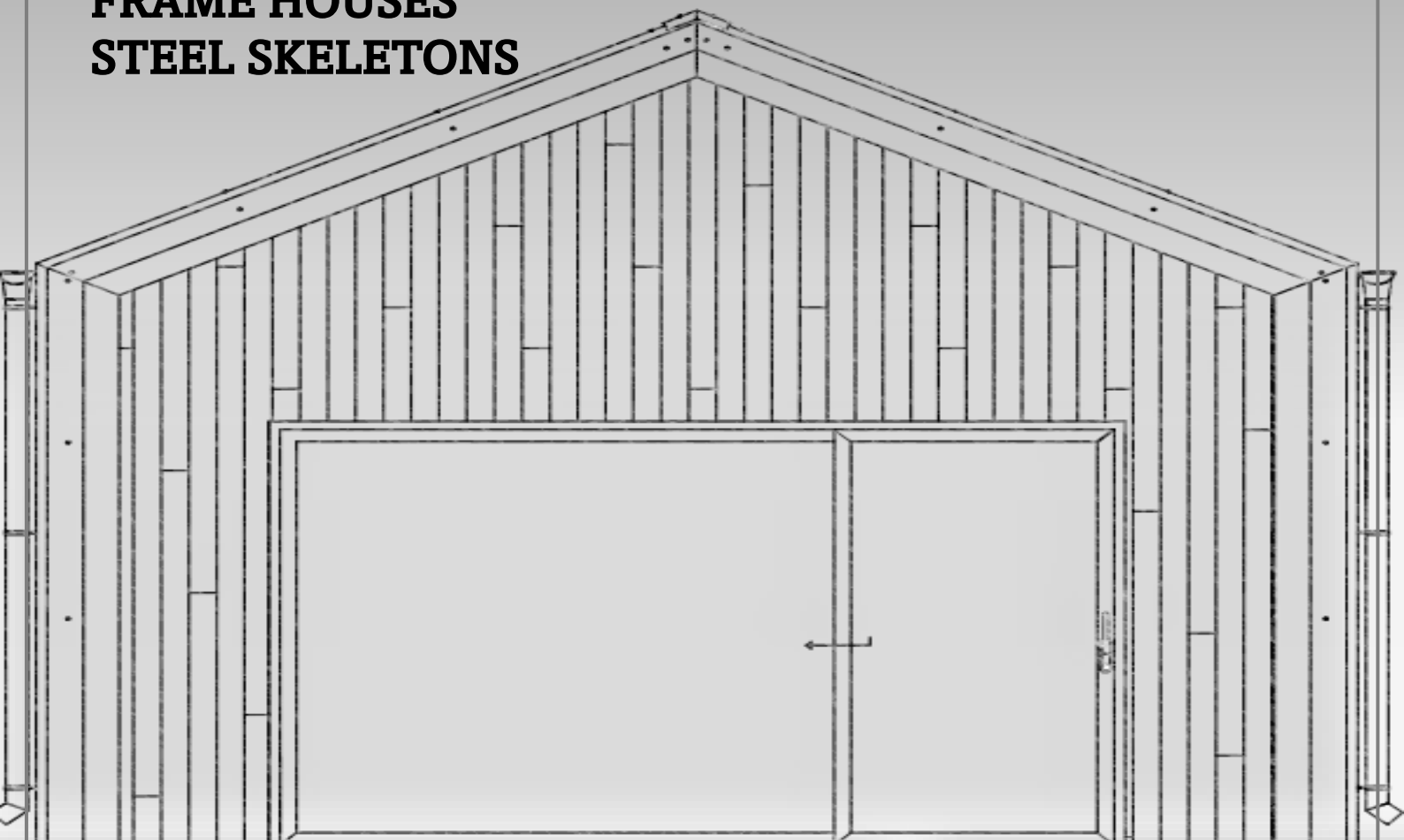


FRAME HOUSE
YOUR SKETCH

 +48 501-324-654
 biuro@rosil.pl

**SEND US YOUR PROJECT
AND WE WILL QUOTE IT**

**MODULAR HOUSES
FRAME HOUSES
STEEL SKELETONS**



ROSIL Bartłomiej Kryniewski

Górnicza 1a Street
26-026 Morawica
biuro@rosil.pl
Tel. +48 501-324-654
NIP: 657-288-35-41